

Technical Data Hydraulic lift crane

LR 1280 Litronic²

Basic machine with undercarriage

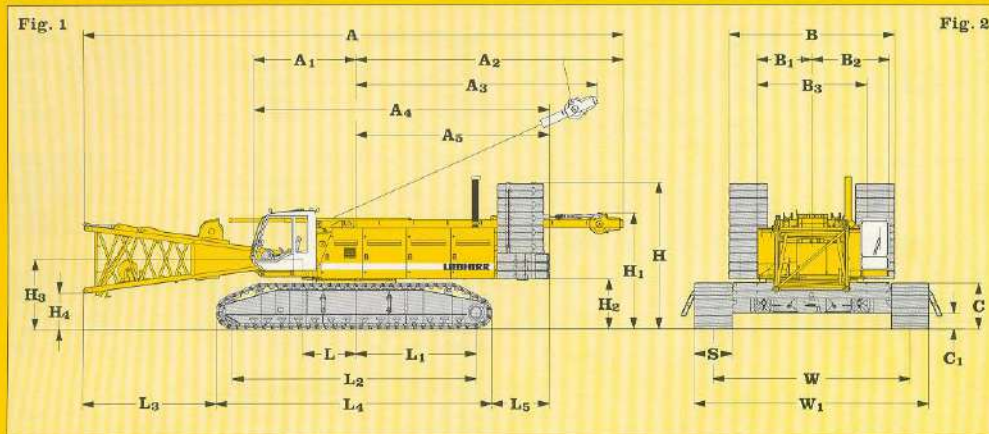


Fig. 1: Dimensions in ——— m **Fig. 2: Dimensions in ——— m**

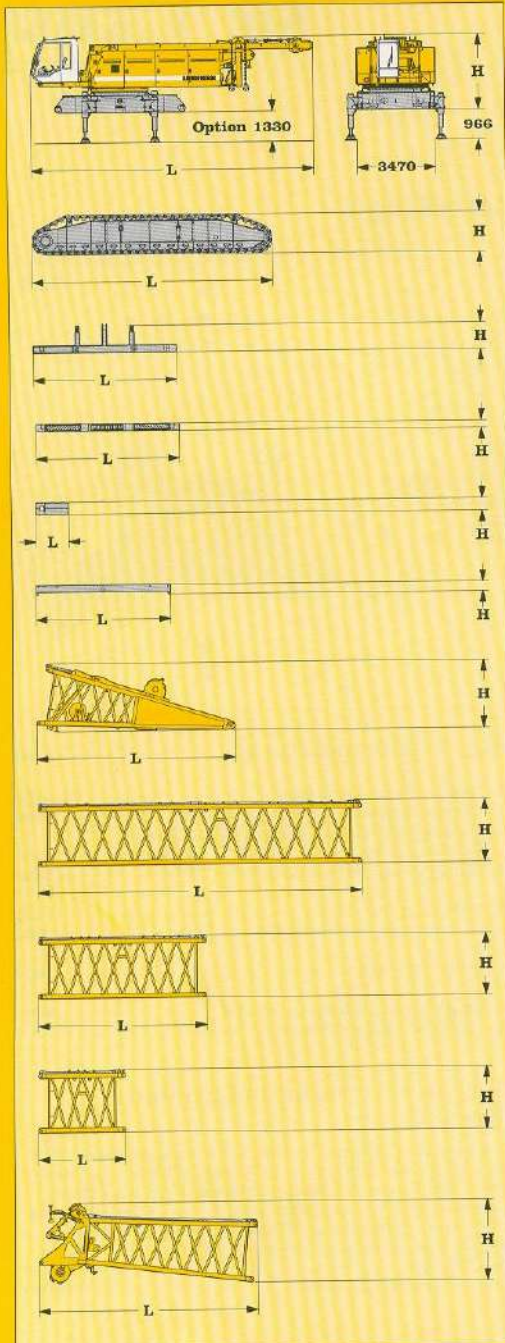
A Overall length of superstructure with lowered A-frame and boom foot	17400	B Width of counterweight	5480
A ₁ Centre of rotation – front edge of cabin	3400	B ₁ Centre of rotation – outside of superstructure	1750
A ₂ Tail swing – lowered A-frame	8560	B ₂ Centre of rotation – outside of cabin in working position	2500
A ₃ Max. tail swing – A-frame in working position	7750	B ₃ Width of superstructure	3500
A ₄ Length of superstructure	9600	C Height of crawlers	1460
A ₅ Centre rotation – rear counterweight	6200	C ₁ Ground clearance of undercarriage	500
H Height over counterweight	4700	S Width of track shoes	1200
H ₁ Height over lowered A-frame	3840	W Track width of undercarriage	6300
H ₂ Ground clearance of superstructure	1600	W ₁ Width of undercarriage	7500
H ₃ Ground clearance of boom foot pivot	2250		
H ₄ Ground clearance of horizontal boom foot	1160		

L Centre of rotation – boom foot pivot	1700
L ₁ Centre of rotation – centre of tumbler	3950
L ₂ Wheel base (centre idler to centre tumbler)	7890
L ₃ Distance from edge of horizontal boom foot to crawler	4360
L ₄ Length of crawlers	9020
L ₅ Distance between rear end of crawler and outside of counterweight	1625

Operating weight and ground pressure

The operating weight includes the basic machine with crawlers, 1200 mm flat pads, 2 main winches 15 t and 20 m main boom (No. 2220.xx) consisting of A-frame, boom foot (7 m), boom head (7 m), boom extension (6 m) 85.5 t basic counterweight and 36 t carbody counterweight and 300 t hook block.

Total Weight	224.4 t
Ground bearing pressure	1.18 kg/cm ²



*) Including pendants

Basic machine

with A-frame, 2x 150 kN winches, without crawlers, boom foot, basic counterweight and carbody counterweight

L Length	mm	12600
H Height	mm	3250
Width	mm	3500
Weight	kg	41600

Crawler

2x

L Length	mm	9000
H Height	mm	1460
Width	mm	1400
Weight	kg	20550

Counterweight

1x

L Length	mm	5480
H Height	mm	1100
Width	mm	1660
Weight	kg	13300

Counterweight

2x

L Length	mm	5480
H Height	mm	340
Width	mm	1660
Weight	kg	10600

Counterweight

10x

L Length	mm	1500
H Height	mm	500
Width	mm	1360
Weight	kg	5100

Carbody counterweight

4x

L Length	mm	5000
H Height	mm	350
Width	mm	1150
Weight	kg	9500

Boom foot (No. 2220.xxx)

L Length	mm	7350
H Height	mm	2200
Width	mm	2420
Weight	kg	5620

Tubular boom section (No. 2220.xx)

11.7m

L Length	mm	11920
H Height	mm	2370
Width	mm	2420
Weight*	kg	2885

Tubular boom section (No. 2220.xx)

6m

L Length	mm	6250
H Height	mm	2370
Width	mm	2420
Weight*	kg	1875

Tubular boom section (No. 2220.xx)

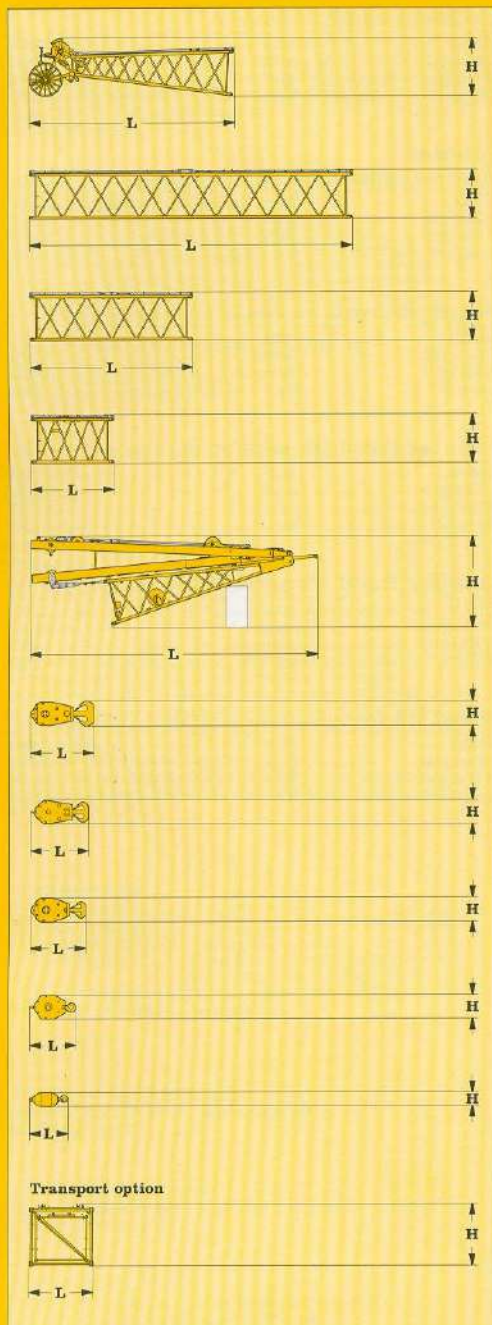
3m

L Length	mm	3250
H Height	mm	2370
Width	mm	2420
Weight*	kg	1130

Boom head (No. 2220.xx)

L Length	mm	8050
H Height	mm	2950
Width	mm	2420
Weight*	kg	4690

Transport dimensions and weights



*) Including pendants

Jib head (No. 1916.xx)

Width	mm	2050
L Length	mm	7750
H Height	mm	2200
Weight*	kg	1550

Tubular jib section (No. 1916.xx) 12 m

Width	mm	2050
L Length	mm	12150
H Height	mm	1820
Weight*	kg	1250

Tubular jib section (No. 1916.xx) 6 m

Width	mm	2050
L Length	mm	6150
H Height	mm	1820
Weight*	kg	690

Tubular jib section (No. 1916.xx) 3 m

Width	mm	2050
L Length	mm	3150
H Height	mm	1820
Weight*	kg	550

Jib foot (No. 1916.xxx) with A-frames

Width	mm	2050
L Length	mm	10850
H Height	mm	3150
Weight*	kg	6400

300 t hook block - 11 sheaves

Width	mm	880	1230
L Length	mm	2520	2520
H Height	mm	820	820
Weight	kg	3200	5500

150 t hook block - 5 sheaves

Width	mm	760
L Length	mm	2130
H Height	mm	880
Weight	kg	4000

100 t hook block - 3 sheaves

Width	mm	680
L Length	mm	2000
H Height	mm	880
Weight	kg	3300

45 t hook block - 1 sheave

Width	mm	280	420	540
L Length	mm	1850	1850	1850
H Height	mm	820	820	820
Weight	kg	800	1600	2400

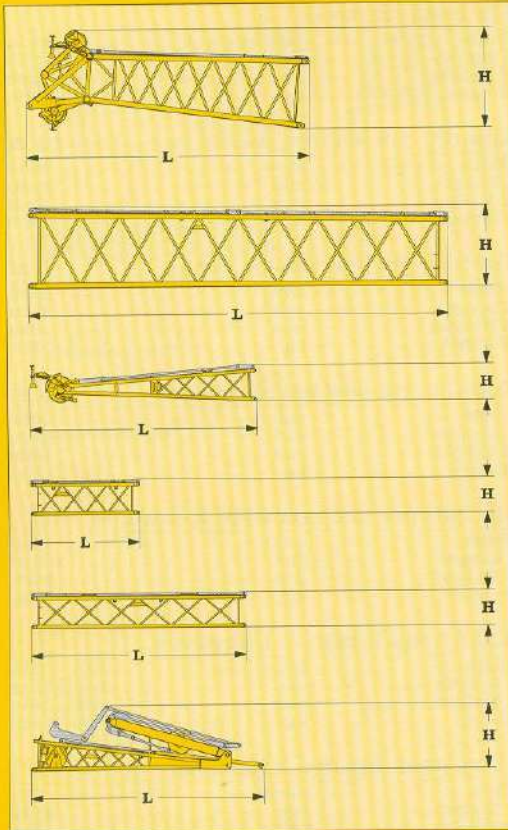
16 t single hook

Width	mm	500
L Length	mm	1120
H Height	mm	500
Weight	kg	900

Boom - jib transport option

(No. 2220.xx/1916.xx)	m	11.7/12	6 / 6	3 / 3
Width	mm	12500	6250	3250
L Length	mm	2420	2420	2420
H Height	mm	2370	2370	2370
Weight*	kg	4130	2560	1680

Transport dimensions and weights



*) Including pendants

L – boom head (No. 2018.xx)

Width	mm	2230
L Length	mm	7900
H Height	mm	2700
Weight*	kg	2700

Tubular section tapered (No. 2220.xx / 2018.xx) 11.7 m

Width	mm	2420
L Length	mm	11920
H Height	mm	2370
Weight*	kg	1740

Fixed jib head (No. 1008.xx)

Width	mm	1100
L Length	mm	8470
H Height	mm	1020
Weight*	kg	935

Tubular fixed jib section (No. 1008.xx) 3 m

Width	mm	1100
L Length	mm	3120
H Height	mm	1020
Weight*	kg	300

Tubular fixed jib section (No. 1008.xx) 6 m

Width	mm	1100
L Length	mm	6120
H Height	mm	1020
Weight*	kg	460

Fixed jib foot (No. 1008.xx) with A-frames

Width	mm	1450
L Length	mm	6620
H Height	mm	1850
Weight*	kg	1950

Transport dimensions and weights



Engine

Water cooled, V 8 cylinder Liebherr diesel engine, turbo charged with intercooler, model D 9408 TI-E, power rating according to ISO 9249, 400 kW (544 hp) at 1900 rpm.
 Fuel Tank: 2x 460 l capacity with continuous level indicator and reserve warning.



Hydraulic system

An axial displacement pump supplies the open loop hydraulic system for boom luffing, jib luffing and travel. The main hoist winches and swing are operated in a closed loop system. All functions can be operated simultaneously. To minimize peak pressure an automatic working pressure cut-off is integrated in a pump. All filters are electronically monitored.

The use of synthetic environmentally friendly oils (biodegradable) is possible.
 Max. working pressure: 5000 psi
 Hydraulic oil tank capacity 248 gal



Winches

Winch options:
 Line pull (1st layer) _____ max. 215 kN
 Line pull (7th layer) _____ 150 kN
 Rope diameter: _____ 28 mm
 Rope diameter: _____ 730 mm
 Rope speed m/min on average _____ 0 - 138
 Rope capacity 7 layers _____ 570 m

The winches are outstanding in their compact design and easy assembly.

Propulsion is via a planetary gearbox in oil bath. Load support by the hydraulic system; additional safety factor provided by a spring loaded, multi-disc holding brake. The main winches use pressure controlled, variable flow hydraulic motors. This system features sensors that automatically adjust oil flow to provide max. winch speed depending on load.

Option - winch with freefall system:
 Clutch and braking functions on the freefall system are provided by a compact designed, low wear and maintenance free multi-disc brake.



Equipment

- Main boom (2220.xx) max. length _____ 90.2 m
- High reach (2220.xx and 2018.xx) _____ 98.9 m
- Luffing jib (1916.xx) max. length _____ 83 m
- Max. combination _____ boom 55.1 m and luffing jib 83 m
 (boom 58.1 m and luffing jib 71 m)
- Fixed jib (1008.xx) _____ 11 m - 26 m
- Auxiliary jib 30 t lifting capacity



Boom luffing winch

Max. line pull: 150 kN. Rope diameter: 24 mm.
 137 sec. to boom from 15° to 86°



Jib luffing winch

Max. line pull: 105 kN. Rope diameter: 20 mm.
 51 sec. to boom from 15° to 78°



Noise emission

Noise emissions correspond with 2000/14/EC directive on noise emission by equipment used outdoors.



Swing drive

Consists of rollerbearing with external teeth, swing drive with fixed axial piston hydraulic motor, spring loaded and hydraulically released multi-disc holding brake, planetary gearbox and pinion.

Free swing with hydraulic moment control reduces wear to a minimum. A multi-disc holding brake acts automatically at zero swing motion.
 Swing speed from 0 - 1.8 rpm continuously variable.



Crawler

Propulsion through axial piston motor, hydraulically released spring loaded multi-disc brake, crawler tracks, hydraulic chain tensioning device.

Flat track shoes _____ 1200 mm
 Drive speed _____ 0 - 1.3 km/h



Control

The control system - developed and manufactured by Liebherr - is designed to withstand extreme environmental conditions such as temperature, vibration and electromagnetic interference and to meet all requirements that are needed in heavy duty crane operation.

Complete machine operating data are shown on a high resolution display.

Standard operational information is displayed by means of graphical symbols, fault indications are displayed in plain text (more than 10 languages available).

The cranes are equipped with proportional control for all main movements, which can be carried out simultaneously. A backup control system, that allows limited use of the crane is standard. This feature increases the safety and availability of the crane even further.

The crane is operated with 2 multi-directional joysticks, the right for winch I and boom hoisting, the left for winch II and slewing control.

Option:

Parallel handle bar joysticks for simultaneous winch and luffing jib operation.

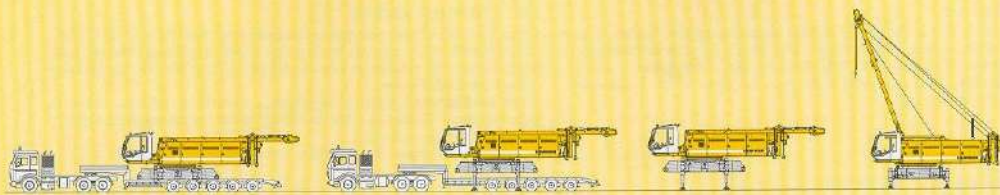
The crawlers are activated with the two central foot pedals. Additionally, hand levers can be attached to the pedals.



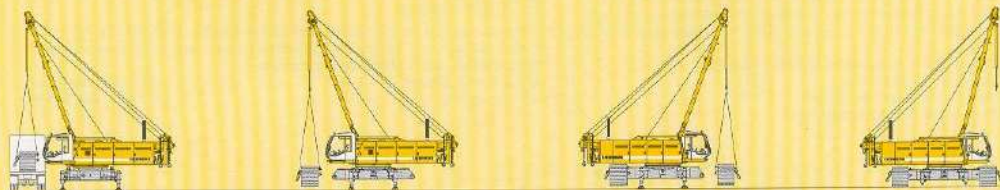
Remarks

1. The lifting capacities stated are valid for lifting operation only (corresponds with crane classification according to F.E.M. 1.001, crane group A1)
2. Crane standing on firm, horizontal ground.
3. The weight of the lifting device (hoisting ropes, hook block, shackle etc.) must be deducted from the gross lifting capacity to obtain a net lifting value.
4. Additional equipment on boom (e.g. boom walkways, auxiliary jib) must be deducted to get the net lifting capacity.
5. For max. wind speed please refer to lift chart in operator's cab or manual.
6. The slewing speed of the load must not exceed 90 m/min.
7. Working radii are measured from centre of swing and under load.
8. The lifting capacities are valid for 360 degrees of swing.
9. Calculation of stability under load is based on DIN 15019 / part 2 / chart 1 and ISO 4306 Tab1 + 2, tipping angle 4°.
10. The structures are calculated according to F.E.M. 1.001 - 1998 (prEN 13001 / T2 / 1997).

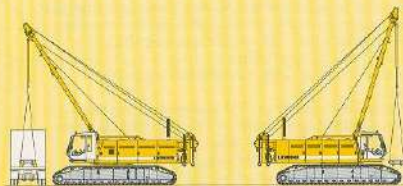
Technical description



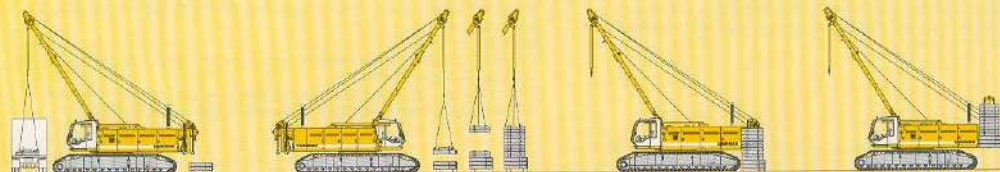
Unloading of basic machine



Unloading and assembly of crawlers



Unloading and assembly of carbody counterweight

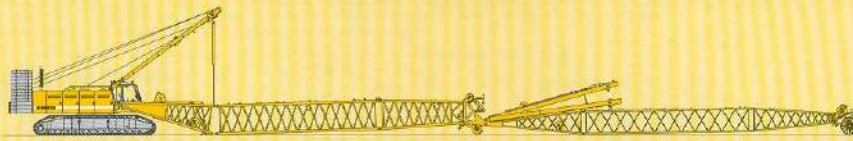


Unloading and assembly of counterweight

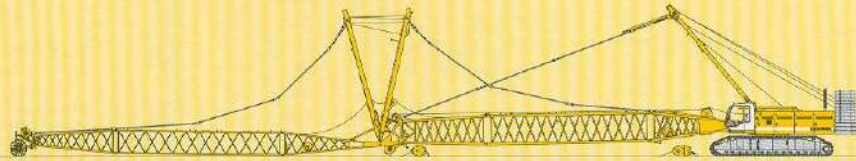


Unloading and assembly of boom - Assembly of boom foot

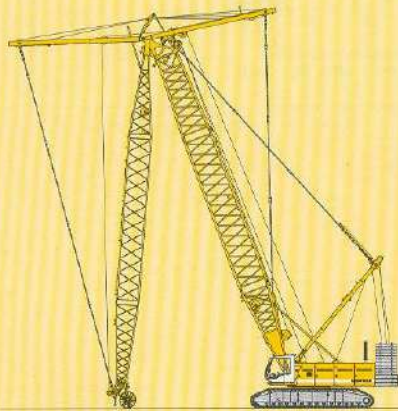
Self assembly system



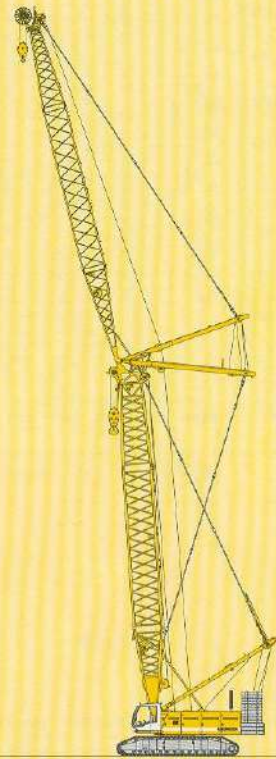
Assembly of boom



Reeving of hoist and jib ropes



Luffing of boom and jib



Working position

● Booming up - crane in working position

Capacities in metric tons for boom lengths from 20 m to 90.2 m – with 15.0 t winches:
counterweight 85.5 t and 36.0 t carbody counterweight

Radius (m)	Boom length in (m)													Radius (m)
	20	25.7	31.7	37.4	43.4	49.1	55.1	60.8	66.8	72.5	78.5	84.2	90.2	
	t	t	t	t	t	t	t	t	t	t	t	t	t	
4.3	275.8													4.3
5	265.4	256.6												5
6	231.8	225.5	205.4	188.7	173.6									6
7	202.4	187.3	172.4	160.2	148.9	139.4	120.5							7
8	171.6	159.6	148.4	139.0	130.2	122.6	115.4	96.7	80.9	65.1				8
9	148.0	138.8	130.0	122.6	115.4	109.3	103.3	92.1	78.4	64.7	59.4	48.4		9
10	130.0	122.7	115.5	109.5	103.5	98.4	93.4	85.9	74.9	61.6	58.3	47.9	40.9	10
12	102.0	99.2	94.2	89.9	85.5	81.8	78.0	74.6	63.3	57.2	56.0	45.6	39.1	12
14	81.7	82.0	79.2	75.9	72.5	69.6	66.6	63.9	61.1	52.1	51.9	43.5	37.7	14
16	67.7	68.0	67.8	65.5	62.7	60.3	57.8	55.6	53.3	48.4	48.4	41.5	35.9	16
18	57.5	57.9	57.7	57.4	55.0	53.0	50.9	49.0	47.0	44.4	43.3	39.9	34.5	18
20	49.6	50.1	49.9	49.7	48.9	47.1	45.2	43.6	41.8	40.2	38.3	37.1	33.3	20
22		44.0	43.8	43.6	43.3	42.2	40.6	39.1	37.5	36.1	34.6	33.2	30.6	22
24		39.0	38.8	38.7	38.3	38.0	36.6	35.3	33.8	32.5	31.1	29.9	28.3	24
26		34.8	34.8	34.6	34.2	33.9	33.3	32.0	30.7	29.5	28.2	27.0	25.8	26
28			31.3	31.2	30.8	30.5	30.1	29.2	28.0	26.8	25.6	24.5	23.4	28
30			28.3	28.3	27.9	27.6	27.1	26.8	25.6	24.5	23.4	22.3	21.2	30
32			25.7	25.8	25.4	25.1	24.6	24.3	23.5	22.5	21.4	20.4	19.3	32
34				23.5	23.2	22.9	22.4	22.1	21.6	20.6	19.6	18.6	17.6	34
36				21.6	21.3	21.0	20.5	20.1	19.7	19.0	18.0	17.1	16.1	36
38				19.8	19.5	19.3	18.8	18.4	17.9	17.5	16.5	15.6	14.7	38
40					18.0	17.7	17.3	16.9	16.4	16.0	15.2	14.3	13.4	40
44						15.1	14.7	14.3	13.8	13.4	12.9	12.1	11.2	44
48						12.9	12.5	12.2	11.7	11.3	10.7	10.2	9.3	48
50							11.6	11.2	10.7	10.3	9.8	9.3	8.5	50
55							9.5	9.2	8.7	8.3	7.8	7.3	6.6	55
60								7.4	7.0	6.6	6.1	5.7	5.1	60
65									5.6	5.2	4.7	4.3	3.7	65
70										4.0	3.5	3.0	2.5	70
75											2.4	2.0	1.5	75
80												1.1		80

Above lift chart is for reference only. For actual lift duty please refer to lift chart in operator's cab or manual.

Lift chart for crane configuration

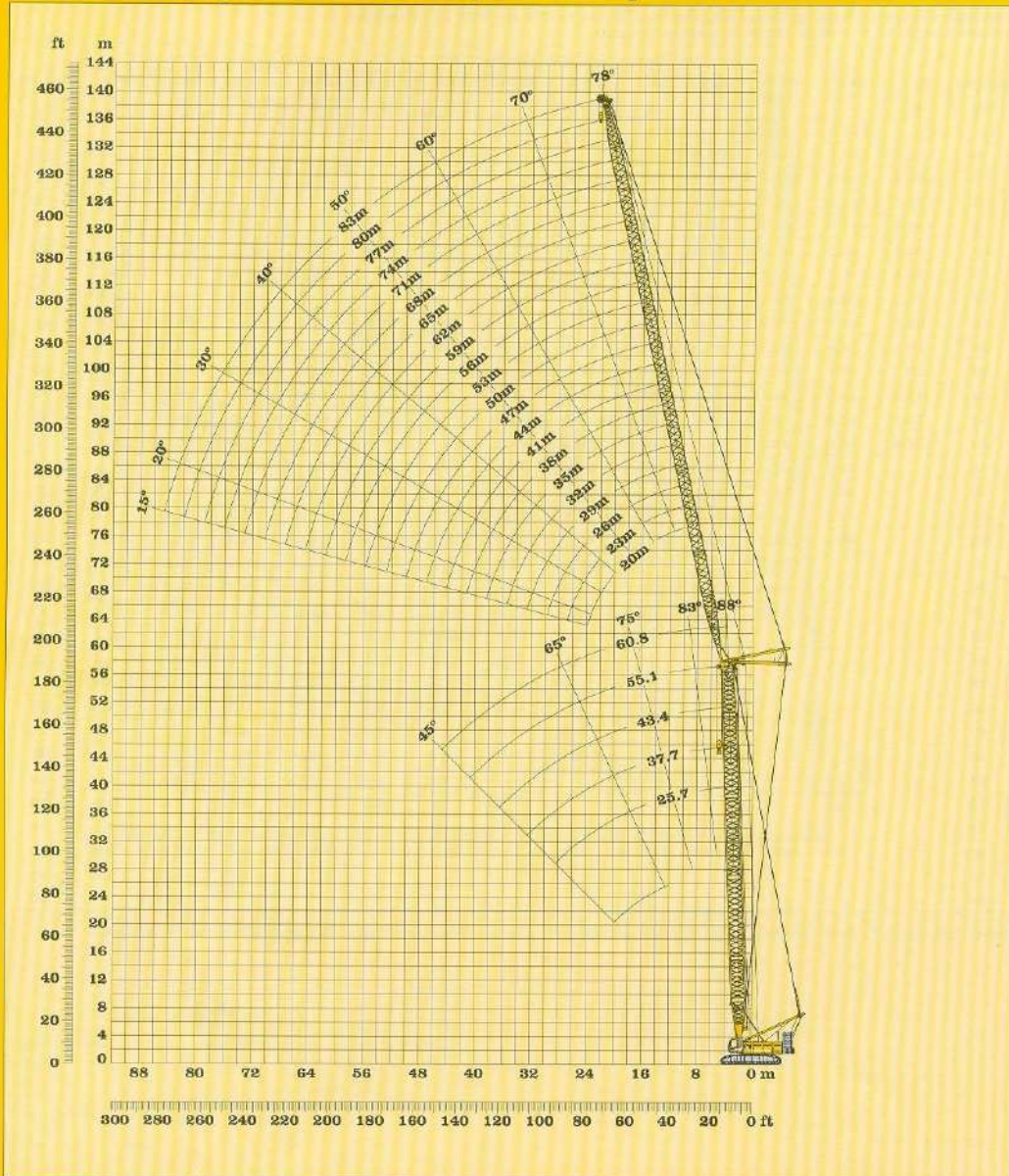
Capacities in metric tons for L boom lengths from 25.7 m to 98.9 m – with 15 t winches:
counterweight 85.5 t and 36 t carbody counterweight

Radius (m)	L – boom length in (m)														Radius (m)
	25.7	34.7	40.4	46.4	52.1	58.1	63.8	69.8	75.5	81.5	87.2	93.2	98.9		
(m)	t	t	t	t	t	t	t	t	t	t	t	t	t	t	(m)
5.1		140.0													5.1
6	140.0	140.0	138.0	126.2											6
7	140.0	135.3	131.3	120.5	109.6	95.1									7
8	129.0	121.5	119.3	112.0	100.5	91.4	82.0	70.7	61.5						8
9	115.8	111.8	104.4	99.7	93.9	85.2	76.8	68.9	61.5	52.2	43.7				9
10	106.2	99.1	93.7	88.4	83.6	79.3	72.9	65.5	59.2	51.6	43.6	34.5	29.1		10
12	88.8	80.1	76.2	73.0	68.8	65.1	61.5	58.1	55.4	49.8	42.3	33.6	28.5		12
14	76.6	68.9	64.1	61.2	58.3	55.7	52.4	49.4	47.1	44.5	39.9	32.7	27.8		14
16	65.3	60.7	56.5	52.9	50.0	47.9	45.6	43.2	40.9	39.0	35.9	30.6	26.7		16
18	56.8	54.4	50.5	47.4	44.2	41.8	39.7	37.8	36.2	35.1	32.8	28.9	25.7		18
20	50.1	48.0	46.0	42.8	40.0	37.5	35.2	33.4	31.9	31.2	29.9	27.6	24.9		20
22	44.4	42.7	41.1	39.3	36.4	34.2	31.9	29.9	28.4	27.8	26.8	24.9	23.5		22
24	39.9	38.6	36.9	35.7	33.6	31.3	29.2	27.3	25.6	25.0	24.2	22.5	21.2		24
26	35.6	35.0	33.5	32.3	30.9	29.0	26.9	25.1	23.5	22.8	22.0	20.3	19.2		26
28		31.8	30.7	29.4	28.1	27.0	24.9	23.1	21.7	21.1	20.2	18.5	17.4		28
30		29.1	28.1	27.0	25.7	24.7	23.3	21.5	20.0	19.6	18.8	17.1	15.9		30
32		26.7	25.7	24.9	23.6	22.6	21.4	20.1	18.6	18.2	17.5	15.9	14.7		32
34		24.4	23.7	23.0	21.8	20.7	19.7	18.6	17.4	16.9	16.3	14.8	13.7		34
36			22.0	21.2	20.2	19.1	18.1	17.1	16.2	15.9	15.3	13.8	12.8		36
38			20.3	19.6	18.7	17.8	16.6	15.7	14.9	15.0	14.4	12.9	11.9		38
40			18.6	18.2	17.3	16.5	15.4	14.4	13.6	13.8	13.6	12.2	11.1		40
42				17.0	16.0	15.3	14.3	13.3	12.4	12.8	12.7	11.5	10.4		42
44				15.7	14.9	14.1	13.2	12.3	11.4	11.8	11.8	10.8	9.8		44
46				14.4	13.9	13.1	12.2	11.4	10.5	10.9	11.0	10.0	9.2		46
50					12.0	11.4	10.4	9.6	8.9	9.3	9.5	8.6	7.9		50
55						9.4	8.6	7.7	7.0	7.6	8.0	7.1	6.4		55
60							7.1	6.2	5.4	6.0	6.7	5.9	5.1		60
65								5.1	4.2	4.6	5.5	4.8	4.1		65
70									3.3	3.6	4.5	3.8	3.2		70
75										2.9	3.7	3.0	2.4		75
80											2.2	2.9	2.3	1.6	80
85												2.0	1.7	1.2	85
90													1.0		90

Above lift chart is for reference only. For actual lift duty please refer to lift chart in operator's cab or manual.

Lift chart for L – boom configuration

85.5 t counterweight and 36.0 t carbody counterweight



Working range - luffing jib 78° - 15°
main boom 88° - 45°

Main boom 25.7 m

Radius in (m)	Jib length (m)								
	20	29	41	50	59	68	74	80	83
	t	t	t	t	t	t	t	t	t
8.2	82.4								
11	75.7	58.7							
13	68.0	54.0	36.5						
16	57.6	47.5	32.9	27.0					
18	51.1	43.6	30.7	25.8	18.6				
20	44.0	40.5	28.9	24.7	17.7	14.0	12.2		
22	37.5	37.3	27.1	23.7	17.0	13.4	11.7	10.0	9.1
30		25.6	22.6	20.8	14.9	11.9	10.5	8.8	8.0
42			16.0	16.0	13.0	10.5	9.3	7.6	6.9
50				12.6	11.5	9.7	8.7	6.8	6.3
55					10.4	8.7	8.3	6.3	5.9
60					9.0	8.6	7.8	6.0	5.6
65						7.7	7.3	5.6	5.3
70							6.6	5.1	4.9
75							5.6	4.8	4.6
80							4.5	4.2	

Main boom 37.4 m

Radius in (m)	Jib length (m)								
	20	29	41	50	59	68	74	80	83
	t	t	t	t	t	t	t	t	t
8.6	71.5								
11	68.2	52.7							
13	61.4	49.8	33.3						
16	52.6	44.5	30.9	24.9					
18	46.8	41.1	29.1	23.9	17.5				
20	40.6	37.5	27.5	23.0	16.7	13.2	11.3		
22	35.9	33.6	26.0	22.1	16.1	12.6	11.1	9.4	8.4
32		22.4	20.4	18.7	13.8	11.0	9.7	8.2	7.4
42			15.4	14.6	12.5	10.0	8.9	7.3	6.6
50				12.0	10.7	9.2	8.4	6.6	6.1
55					9.6	8.6	7.9	6.2	5.7
60					8.6	7.8	7.2	5.8	5.4
65						7.2	6.5	5.4	5.1
70							6.0	5.0	4.8
75							5.3	4.7	4.4
80							4.2	4.0	

Main boom 43.4 m

Radius in (m)	Jib length (m)								
	20	29	41	50	59	68	74	80	83
	t	t	t	t	t	t	t	t	t
8.8	64.8								
11	63.2	48.7							
14	55.3	45.8	31.6						
16	49.8	42.9	29.8	23.9					
18	44.3	40.0	28.1	23.0	16.9				
20	38.9	36.2	26.6	22.1	16.2	12.8			
22	34.5	32.1	25.3	21.3	15.6	12.3	10.8	9.1	8.1
32		21.3	19.5	18.1	13.5	10.8	9.5	7.9	7.2
42			15.0	14.1	12.2	9.8	8.7	7.1	6.5
50				11.6	10.4	9.0	8.2	6.5	5.9
55					9.3	8.3	7.7	6.0	5.6
60					8.4	7.5	7.0	5.7	5.3
65						6.9	6.2	5.3	5.0
70							5.7	4.9	4.6
75							5.0	4.5	4.2
80							4.0	3.8	

Main boom 49.1 m

Radius in (m)	Jib length (m)								
	20	29	41	50	59	68	74	80	83
	t	t	t	t	t	t	t	t	t
9.0	55.9								
11	55.4	43.3							
14	50.5	41.8	29.3						
16	44.9	39.7	28.0	22.3					
18	39.1	36.3	26.6	21.6	16.0				
20	34.8	33.0	25.3	20.8	15.4	12.1			
22	31.1	29.3	24.1	20.1	14.8	11.7	10.3	8.6	
24		26.6	23.0	19.5	14.3	11.3	9.9	8.4	7.6
32		20.2	18.1	17.0	13.0	10.3	9.1	7.6	6.9
44			13.3	12.4	11.0	9.3	8.2	6.6	6.0
50				10.9	9.7	8.7	7.8	6.2	5.7
55					8.6	7.9	7.3	5.8	5.4
60					7.9	6.9	6.5	5.4	5.1
70						5.6	5.2	4.5	4.2
75							4.6	4.1	3.8
80								3.6	3.4

Main boom 55.1 m

Radius in (m)	Jib length (m)								
	20	29	41	50	59	68	74	80	83
	t	t	t	t	t	t	t	t	t
9.2	50.4								
12	49.6	38.9							
14	46.2	37.8	27.4						
16	41.6	36.2	26.4	20.3					
18	36.5	33.2	25.3	19.7	15.2				
20	32.8	30.3	24.1	19.0	14.7	11.7			
22	29.3	27.4	23.0	18.3	14.2	11.2	9.8	8.2	
24	26.3	24.7	21.8	17.8	13.8	10.8	9.5	8.0	7.3
32		19.0	17.1	15.5	12.5	9.9	8.8	7.3	6.6
44			12.8	11.4	10.4	8.8	7.8	6.4	5.8
50				10.1	9.1	8.2	7.3	6.0	5.5
55					8.1	7.4	6.8	5.6	5.2
60					7.5	6.5	6.1	5.2	4.9
70						5.3	4.8	4.2	3.9
75							4.3	3.8	3.4
80								3.3	3.1

Main boom 60.8 m

Radius in (m)	Jib length (m)			
	20	29	41	50
	t	t	t	t
9.4	43.5			
12	42.2	34.0		
14	39.7	33.0	24.2	
16	36.2	31.8	23.5	18.5
24	24.1	22.4	19.2	16.4
32		17.6	15.1	13.9
44			11.5	10.4
50				9.3

Capacities in metric tons with luffing jib (No. 1916.xx) 85.5 t counterweight + 36.0 t carbody counterweight.
Above lift chart is for reference only. For actual lift duty please refer to lift chart in operator's cab or manual.

Lift chart - tower crane - offset 88°

Main boom 25.7 m

Radius in (m)	Jib length (m)								
	20	29	41	50	59	68	74	80	83
12.2	76.6								
16	64.4	51.6							
20	52.4	43.9	30.5						
22	47.5	41.1	28.6	24.3					
24	39.5	38.2	27.2	23.4	16.6				
28		33.9	24.9	22.2	15.7	12.4			
30		31.5	23.9	21.7	15.3	12.2	10.7	9.0	
32		28.6	22.9	21.2	14.9	11.9	10.5	8.8	8.0
44			16.5	18.1	13.2	10.6	9.4	7.6	7.0
50				15.6	12.5	10.0	8.9	7.1	6.5
60					10.4	9.4	8.3	6.2	5.8
65						8.7	8.0	5.9	5.5
70						7.6	7.5	5.4	5.2
75							6.6	5.1	4.9
80								4.8	4.6
85									4.2

Main boom 37.4 m

Radius in (m)	Jib length (m)								
	20	29	41	50	59	68	74	80	83
13.6	67.6								
18	53.6	45.7							
20	48.5	42.7	29.1						
24	40.9	37.6	26.5	22.2					
26	37.4	35.1	25.4	21.6	15.5				
28		33.0	24.4	21.2	15.1	11.9			
30		30.8	23.7	20.8	14.8	11.7	10.2		
32		28.6	22.9	20.5	14.5	11.4	10.0	8.4	
34		26.6	22.0	20.0	14.1	11.2	9.9	8.2	7.5
46			16.2	16.8	12.6	10.1	8.9	7.3	6.6
55				13.0	11.7	9.4	8.3	6.5	6.0
60					10.7	9.1	8.1	6.1	5.7
70						7.9	7.4	5.4	5.1
75							6.8	5.1	4.8
80								4.8	4.6
85									4.3

Main boom 43.4 m

Radius in (m)	Jib length (m)								
	20	29	41	50	59	68	74	80	83
14.3	61.6								
18	51.1	44.4							
22	42.5	39.3	27.2						
24	39.2	37.0	25.9	21.4					
26	36.4	34.6	25.0	20.9	15.1				
30		30.1	23.3	20.2	14.5	11.4			
32		27.5	22.6	19.9	14.2	11.2	9.8	8.1	
34		36.1	21.8	19.5	13.9	11.0	9.6	8.0	7.3
36		24.1	20.9	19.1	13.6	10.8	9.5	7.9	7.1
46			16.5	16.4	12.4	9.9	8.7	7.1	6.5
55				13.2	11.5	9.3	8.2	6.4	5.9
65					9.4	8.5	7.7	5.8	5.4
70						7.9	7.4	5.4	5.1
75							6.8	5.1	4.8
80								4.8	4.6
85									4.5

Main boom 49.1 m

Radius in (m)	Jib length (m)								
	20	29	41	50	59	68	74	80	83
15.0	52.8								
18	48.3	40.0							
22	39.7	36.0	25.9						
24	36.7	33.5	24.8	20.0					
28	30.9	29.3	23.2	19.5	14.2				
30		27.7	22.5	19.2	13.9	10.9			
32		25.9	21.8	18.9	13.7	10.8	9.4		
34		24.5	21.1	18.6	13.4	10.6	9.3	7.7	6.9
36		23.1	20.3	18.6	13.1	10.4	9.1	7.5	6.9
48			15.2	14.7	11.8	9.4	8.3	6.7	6.1
55				12.7	11.0	9.0	7.9	6.2	5.7
68					9.3	8.2	7.4	5.6	5.2
70						7.7	7.1	5.2	4.9
75							6.6	4.9	4.6
80								5.8	4.7
85									4.4

Main boom 55.1 m

Radius in (m)	Jib length (m)								
	20	29	41	50	59	68	74	80	83
15.8	46.7								
20	39.7	34.5							
22	36.2	32.1	24.4						
26	31.4	28.0	23.0	18.1					
28	29.7	26.2	22.2	17.8	13.7				
30		25.2	21.5	17.6	13.4	10.5			
32		24.1	20.7	17.3	13.2	10.4	9.0		
34		22.9	19.9	17.0	13.0	10.2	8.9	7.3	
36		21.9	19.2	16.5	12.7	10.0	8.8	7.3	6.6
48			15.0	13.5	11.4	9.1	8.1	6.5	5.9
55				11.8	10.5	8.7	7.7	6.1	5.5
65					8.9	8.0	7.1	5.4	5.0
70						7.4	6.7	5.1	4.8
75							6.5	6.2	4.7
80								5.5	4.5
85									4.3

Main boom 60.8 m

Radius in (m)	Jib length (m)								
	20	29	41	50	59	68	74	80	83
16.5	38.7								
20	34.1	29.6							
24	29.1	25.9	20.8						
26	27.5	24.5	19.9	16.7					
28	26.2	23.1	19.1	16.4					
38			18.8	15.7	14.0				
48				13.3	12.0				
55					10.7				

Capacities in metric tons with luffing jib (No. 1916.xx) 85.5 t counterweight + 36.0 t carbody counterweight.
Above lift chart is for reference only. For actual lift duty please refer to lift chart in operator's cab or manual.

Lift chart - luffing jib - main boom angle 83°

Main boom 25.7 m

Radius in (m)	Jib length (m)									
	20	29	41	50	59	68	74	80	83	
t	t	t	t	t	t	t	t	t	t	
18.4	54.5									
24	41.2	39.7								
28	34.0	33.8	26.5							
32		28.7	24.9	21.9						
36		24.8	22.9	21.0	14.7					
40			20.6	20.4	14.1	11.2				
42			19.3	19.8	13.8	11.0	9.7			
44			18.3	18.6	13.6	10.8	9.5	7.8		
46			17.6	17.6	13.3	10.6	9.4	7.7	6.9	
48			16.7	16.6	13.1	10.4	9.2	7.5	6.8	
55				13.9	12.4	9.9	8.8	7.0	6.4	
65					10.3	9.3	8.3	6.1	5.7	
70							8.7	8.0	5.8	5.4
75							7.8	7.5	5.4	5.1
80								6.7	5.2	4.9
85									4.9	4.7

Main boom 37.4 m

Radius in (m)	Jib length (m)								
	20	29	41	50	59	68	74	80	83
t	t	t	t	t	t	t	t	t	t
21.4	41.9								
26	34.7	39.0							
30	30.0	28.6							
32		26.9	24.8						
36		23.7	22.3	20.4					
38		22.1	21.1	20.1	14.0				
40		20.7	20.0	19.0	13.8				
42			19.0	18.1	13.6	10.6			
46			17.0	16.4	13.1	10.3	9.1		
48			16.1	15.6	12.9	10.3	8.9	7.3	
50			15.2	14.8	12.7	10.0	8.8	7.2	6.5
60				11.6	11.2	9.4	8.3	6.5	5.9
65					9.9	9.2	8.1	6.2	5.7
75						7.6	7.3	5.5	5.2
80							6.6	5.2	4.9
85								5.1	4.8
90									4.6

Main boom 43.4 m

Radius in (m)	Jib length (m)									
	20	29	41	50	59	68	74	80	83	
t	t	t	t	t	t	t	t	t	t	
22.9	22.9									
25	30.3	28.8								
32	26.7	25.3	23.6							
36		22.5	21.0	19.7						
40		20.1	18.8	17.9	13.5					
42		18.9	17.9	16.9	13.4					
44			17.0	16.1	13.2	10.3				
46			16.2	15.3	13.0	10.2	8.8			
50			14.7	14.0	12.6	9.9	8.7	7.0	6.3	
60				11.2	10.5	9.3	8.2	6.4	5.9	
65					9.5	8.8	8.0	6.1	5.6	
70						8.5	7.9	7.4	5.8	5.4
75							7.2	6.7	5.5	5.2
85								5.5	5.0	4.7
90									4.5	4.3

Main boom 49.1 m

Radius in (m)	Jib length (m)								
	20	29	41	50	59	68	74	80	83
t	t	t	t	t	t	t	t	t	t
24.4	32.6								
30	26.7	25.3							
34	23.7	22.4	20.9						
38		20.0	18.6	17.6					
42		18.1	16.7	15.9	12.9				
46			15.2	14.4	12.6	9.8			
48			14.5	13.7	12.4	9.7	8.4		
50			13.9	13.1	12.1	9.6	8.4	6.7	
55			12.5	11.7	10.8	9.3	8.1	6.5	5.9
60				10.6	9.7	9.0	7.9	6.3	5.7
70					7.9	7.2	6.8	5.7	5.2
80						5.9	5.5	5.0	4.7
85							4.9	4.5	4.2
90								4.0	3.7
95									3.3

Main boom 55.1 m

Radius in (m)	Jib length (m)										
	20	29	41	50	59	68	74	80	83		
t	t	t	t	t	t	t	t	t	t		
26.0	28.6										
30	24.9	23.6									
36	20.9	19.7	18.2								
40		17.7	16.3	15.4							
44		16.0	14.8	13.9	12.4						
45			13.4	12.6	11.7	9.4					
50			12.8	12.0	11.1	9.3	8.0				
55			11.5	10.8	9.9	9.0	7.9	6.3	5.7		
60				9.7	8.8	8.1	7.7	6.1	5.5		
65					8.8	7.9	7.3	6.8	5.8	5.3	
70						7.2	6.5	6.1	5.6	5.1	
75							5.8	5.4	4.9	4.7	
80								5.3	4.8	4.4	4.1
85									4.3	3.9	3.6
90										3.4	3.1
95											2.7

Main boom 60.8 m

Radius in (m)	Jib length (m)								
	20	29	41	50	59	68	74	80	83
t	t	t	t	t	t	t	t	t	t
27.4	25.3								
32	21.8	20.6							
36	19.4	18.3							
38		17.3	16.0						
42			15.6	14.4	13.5				
46			14.2	13.0	12.2				
55				10.6	9.9				
65					8.0				

Capacities in metric tons with luffing jib (No. 1916.xx) 85.5 t counterweight + 36.0 t carbody counterweight.
Above lift chart is for reference only. For actual lift duty please refer to lift chart in operator's cab or manual.

Lift chart - luffing jib - main boom angle 75°

Main boom 25.7 m

Radius in (m)	Jib length (m)										
	20	29	41	50	59	68	74	80	83		
	t	t	t	t	t	t	t	t	t		
25.6	35.9										
32	27.3	26.9									
38		21.8	21.2								
40		20.4	19.9								
44			17.7	17.3							
48			15.8	15.4	13.2						
50			15.0	14.6	13.0						
55				12.8	12.4	9.9					
60				11.4	10.9	9.6	8.5	6.6			
65					9.7	9.3	8.2	6.3	5.8		
70						8.6	8.3	8.0	6.0	5.5	
75							7.4	7.1	5.7	5.3	
80								6.4	5.4	5.1	
85									5.7	5.2	4.9
90										4.8	4.6

Main boom 37.4 m

Radius in (m)	Jib length (m)										
	20	29	41	50	59	68	74	80	83		
	t	t	t	t	t	t	t	t	t		
30.5	26.6										
36	21.7	21.2									
38	20.2	19.9									
44		16.5	15.9								
46		15.6	15.0								
48			14.2	13.6							
55			11.8	11.4	10.7						
60				10.1	9.5	8.8					
65				9.0	8.5	7.9	7.4	6.1			
70					7.5	7.1	6.6	6.0	5.4		
75						6.7	6.3	5.9	5.4	5.2	
80							5.6	5.3	4.8	4.6	
85								4.7	4.3	4.0	
90									4.2	3.8	3.5
95										3.4	3.1

Main boom 43.4 m

Radius in (m)	Jib length (m)										
	20	29	41	50	59	68	74	80	83		
	t	t	t	t	t	t	t	t	t		
33.1	22.4										
40	17.9	17.3									
46		14.7	13.7								
48			13.8	13.0							
55			11.0	10.4							
60			9.7	9.3	8.4						
65				8.3	7.5	6.9	6.4				
70					6.8	6.1	5.7	5.2	4.9		
75						6.1	5.5	5.0	4.5	4.2	
80							4.9	4.4	4.0	3.7	
85								4.4	3.9	3.5	3.2
90									3.5	3.0	2.8
95										2.6	2.4
100											2.0

Main boom 49.1 m

Radius in (m)	Jib length (m)										
	20	29	41	50	59	68	74	80	83		
	t	t	t	t	t	t	t	t	t		
35.5	19.1										
42	15.9	15.0									
48		12.9	11.7								
50			12.3	11.2							
55			10.0	9.2							
60			9.0	8.2	7.4						
65				7.4	6.5	5.9					
70				6.7	5.8	5.2	4.7	4.2			
75					5.2	4.6	4.1	3.7	3.4		
80						4.7	4.1	3.6	3.1	2.9	
85							3.6	3.2	2.7	2.4	
90								2.7	2.3	2.0	
95									2.4	1.9	1.7
100										1.6	1.3

Main boom 55.1 m

Radius in (m)	Jib length (m)										
	20	29	41	50	59	68	74	80	83		
	t	t	t	t	t	t	t	t	t		
35.0	15.9										
44	13.6	12.6									
50		10.9									
55			8.7								
60			7.7	7.0							
65			7.0	6.3	5.4						
70				5.6	4.8	4.1	3.7				
75					4.2	3.6	3.2	2.7	2.4		
80						3.8	3.1	2.7	2.3	1.9	
85							2.7	2.3	1.8	1.5	
90								2.3	1.9	1.4	1.2
95									1.6	1.1	

Main boom 60.8 m

Radius in (m)	Jib length (m)								
	20	29	41	50	59	68	74	80	83
	t	t	t	t	t	t	t	t	t
40.4	13.2								
46	11.4	10.5							
50		9.5							
55		8.5	7.4						
60			6.6	5.9					
65			5.9	5.2					
70				4.6					
75					4.1				

Capacities in metric tons with luffing jib (No. 1916.xx) 85.5 t counterweight + 36.0 t carbody counterweight.
Above lift chart is for reference only. For actual lift duty please refer to lift chart in operator's cab or manual.

Lift chart - luffing jib - main boom angle 65°

Main boom 25.7 m

Radius (m)	Jib length (m)								
	20	29	41	50	59	68	74	80	83
37.7	19.9								
40	18.4								
46		15.1							
48		14.2							
55			11.4						
60			10.0						
65				8.6					
70					7.1				
75					6.3				
80						5.3			
85						4.7	4.4		
90							3.9	3.5	3.4
95								3.1	2.9
100									2.5

Main boom 37.4 m

Radius (m)	Jib length (m)								
	20	29	41	50	59	68	74	80	83
46.0	12.9								
48	12.2								
55		9.7							
65			7.0						
75				5.1					
80					4.0				
85					3.5				
90						2.6			
95						2.2	1.9		
100							1.5	1.1	

Main boom 43.4 m

Radius (m)	Jib length (ft)								
	20	29	41	50	59	68	74	80	83
50.2	10.1								
60		7.3							
70			5.1						
75				4.1					
80				3.6					
85					2.5				
90					2.1	1.5			
95						1.2			

Main boom 49.1 m

Radius (m)	Jib length (m)								
	20	29	41	50	59	68	74	80	83
54.2	7.8								
55	7.6								
65		5.4							
75			3.5						
80				2.5					
85				2.1					
90					1.0				

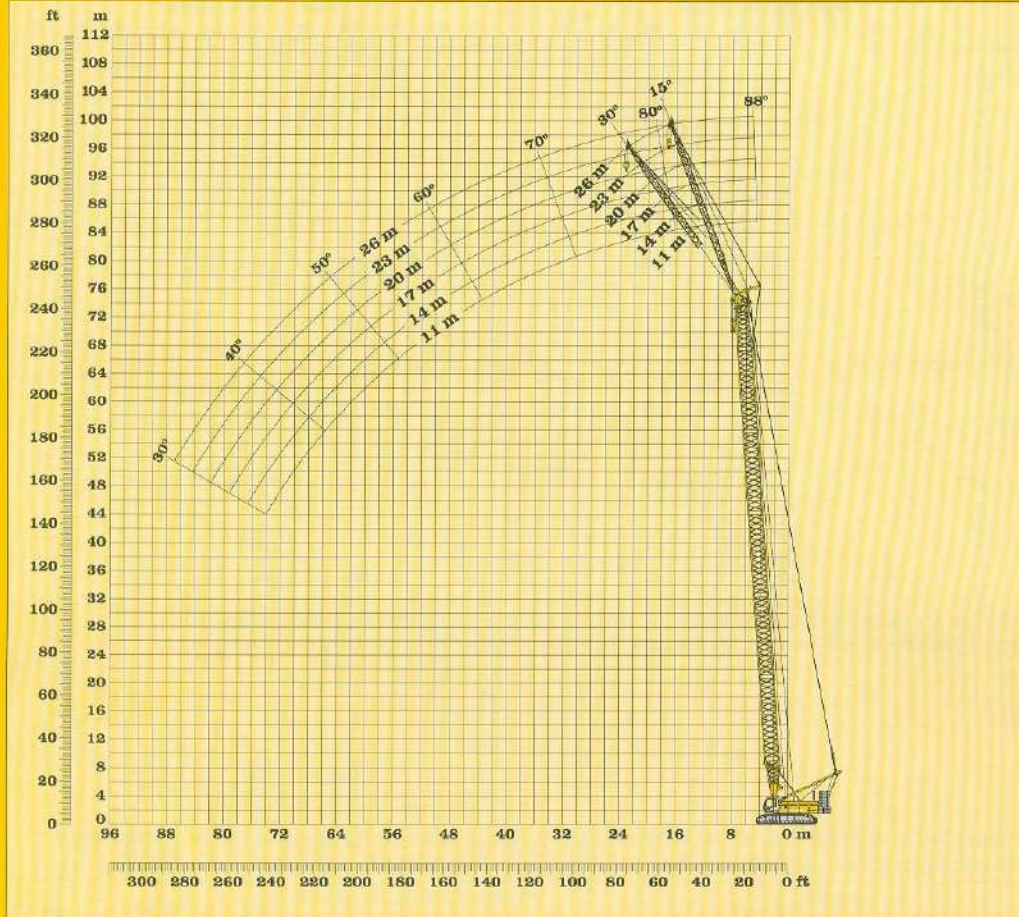
Capacities in metric tons with luffing jib (No. 1916.xx) 85.5 t counterweight + 36.0 t carbody counterweight.
Above lift chart is for reference only. For actual lift duty please refer to lift chart in operator's cab or manual.

Boom configuration for main boom lengths (25.7 m to 60.8 m) – see table 1 on page 8
Jib configuration (No. 1916.xx)

	Length	Number of luffing jib extensions																							
		1	1	1	1	1	1	1	1	1	1	1	1	1	1	1	1	1	1						
Luffing jib foot	7 m	1	1	1	1	1	1	1	1	1	1	1	1	1	1	1	1	1	1						
Luffing jib insert	3 m		1			1		1		1		1		1		1		1	1						
Luffing jib insert	6 m	1	1				1	1			1	1			1	1			1	1					
Luffing jib insert	11.7 m					1	1	1	1	2	2	2	2	3	3	3	3	4	4	4	4	5	5	5	5
Luffing jib head	7 m	1	1	1	1	1	1	1	1	1	1	1	1	1	1	1	1	1	1	1	1	1	1	1	1
Luffing jib length in ft		20	23	26	29	32	35	38	41	44	47	50	53	56	59	62	65	68	71	74	77	80	83		

Lift chart - luffing jib - main boom angle 45°

85.5 t counterweight and 36.0 t carbody counterweight



Boom configuration for boom lengths between 25.7 m to 78.5 m – see table 1 on page 8
 Fixed jib configuration (No. 1008.xx)

Configuration for jib lengths between 11 m to 26 m:

	Length	Number of boom extensions					
Fixed jib foot	5.5 m	1	1	1	1	1	1
Fixed jib insert	3 m		1		1		1
Fixed jib insert	6 m			1	1	2	2
Fixed jib head	5.5 m	1	1	1	1	1	1
Fixed jib length in (m)		11	14	17	20	23	26

Working range - fixed jib 15° and 30°
main boom 88° - 30°

Main boom 25.7 m

Radius (m)	Fixed jib length (m)					
	11	14	17	20	23	26
6.0	36.8					
8	36.8	36.7				
9	36.8	36.8	36.1			
10	36.8	36.8	35.1	30.0		
11	36.8	36.8	33.7	29.0	24.2	
12	36.8	36.8	32.8	27.9	23.4	19.8
34	22.7	18.2	15.3	13.2	11.7	10.6
38		16.7	14.1	12.1	10.7	9.6
40			13.5	11.7	10.3	9.2
44				10.9	9.6	8.5
46					9.3	8.2
50						7.7

Main boom 37.4 m

Radius (m)	Fixed jib length (m)					
	11	14	17	20	23	26
6.4	36.7					
8	36.8	36.7				
9	36.8	36.8	35.8			
10	36.7	36.8	34.7	29.3		
12	36.7	36.8	32.7	28.0	23.0	
13	36.8	36.7	31.8	27.1	22.5	18.9
44	15.9	16.2	14.6	12.4	10.9	9.6
46		15.1	14.2	12.1	10.5	9.3
48		14.0	13.8	11.7	10.2	9.0
50			13.4	11.4	9.9	8.7
55					9.3	8.2
60						7.7

Main boom 43.4 m

Radius (m)	Fixed jib length (m)					
	11	14	17	20	23	26
6.6	36.8					
8	36.7	36.7				
9	36.7	36.8	35.1			
11	36.7	36.7	33.6	28.3		
12	36.7	36.7	32.6	27.7	22.9	
13	36.7	36.7	31.7	27.0	22.3	18.8
30	25.0	24.8	20.4	17.4	15.1	13.1
40	18.0	18.4	16.6	14.1	12.4	10.9
50	13.2	12.6	12.9	12.0	10.4	9.2
55			10.8	11.0	9.8	8.6
60					9.3	8.1
65						7.7

Main boom 49.1 m

Radius (m)	Fixed jib length (m)					
	11	14	17	20	23	26
6.8	36.8					
8	36.8	36.7				
10	36.7	36.8	33.7			
11	36.8	36.8	32.9	27.9		
12	36.8	36.8	32.2	27.2	22.5	
13	36.8	36.8	31.3	26.8	21.9	18.5
30	27.6	26.2	21.4	18.0	15.5	13.3
40	17.6	18.0	17.5	14.8	12.8	11.3
55	9.8	10.1	10.4	10.7	10.2	9.0
60			8.6	8.9	9.2	8.5
65					7.6	7.9
70						6.5

Main boom 55.1 m

Radius (m)	Fixed jib length (m)					
	11	14	17	20	23	26
7.1	36.7					
9	36.7	36.7				
10	36.7	36.7	33.2			
11	36.7	36.7	32.3	27.4		
12	36.7	36.7	31.7	26.8	22.0	
13	36.7	36.7	30.9	26.4	21.6	18.1
30	26.4	26.6	22.1	18.6	15.8	13.5
40	17.1	17.5	17.9	15.4	13.3	11.8
60	7.5	7.8	8.2	8.4	8.7	8.8
65			6.7	6.9	7.2	7.4
70					5.9	6.1
75						4.9

Main boom 60.8 m

Radius (m)	Fixed jib length (m)					
	11	14	17	20	23	26
7.3	36.6					
9	36.7	34.7				
10	36.8	34.8	31.4			
11	36.8	34.9	31.0	26.4		
12	36.7	35.0	30.5	26.1	21.2	
14	36.7	34.9	29.3	25.3	20.7	17.5
30	25.3	25.5	22.4	18.9	15.9	13.6
40	16.7	17.0	17.3	16.0	13.8	12.2
65	5.7	6.0	6.3	6.5	6.8	7.0
70			5.0	5.2	5.5	5.7
75					4.3	4.5
80						3.5

Main boom 66.8 m

Radius (m)	Fixed jib length (m)					
	11	14	17	20	23	26
7.5	35.6					
9	35.7	32.0				
10	35.8	32.0	29.0			
11	35.7	32.0	29.0	25.6		
13	35.3	32.0	29.0	25.0	20.6	
14	35.2	31.9	28.5	24.6	20.1	17.1
30	24.1	24.4	22.3	19.2	16.0	13.6
40	15.8	16.1	16.3	16.5	14.3	12.4
70	3.9	4.2	4.5	4.7	5.0	5.2
75			3.4	3.6	3.8	4.0
80					2.9	3.0
85						2.1

Main boom 75.5 m

Radius (m)	Fixed jib length (m)		
	11	14	17
7.8	30.6		
9	30.5	27.3	
11	30.2	27.3	25.0
20	28.3	26.1	23.8
30	22.5	22.0	20.7
40	14.5	14.7	15.0
50	9.4	9.7	9.9
55	7.5	7.8	8.0
60	5.9	6.2	6.4
65	4.4	4.7	5.0
75	2.1	2.4	2.7
80	1.4	1.7	

Capacities in metric tons with fixed jib (No. 1008.xx) 85.5 t counterweight and 36.0 t carbody counterweight.
Above lift chart is for reference only. For actual lift duty please refer to lift chart in operator's cab or manual.

Lift chart - fixed jib - offset 15°

Main boom 25.7 m

Radius (m)	Fixed jib length (m)					
	11	14	17	20	23	26
8.7	36.8					
11	34.8	27.1				
13	31.9	24.8	20.7			
16	28.3	22.2	18.6	16.0		
18	26.4	20.8	17.3	15.0	13.2	11.9
20	24.8	19.5	16.3	14.0	12.5	11.2
34	18.6	14.5	11.9	10.2	8.9	7.9
38		14.0	11.4	9.6	8.4	7.4
42			11.0	9.2	7.9	6.9
44				9.1	7.8	6.7
48					7.6	6.5
50						6.5

Main boom 37.4 m

Radius (m)	Fixed jib length (m)					
	11	14	17	20	23	26
9.1	36.6					
11	36.3	27.2				
13	33.6	25.5	20.9			
16	30.3	23.3	19.0	16.2		
18	28.6	22.0	18.1	15.3	13.4	
20	27.0	21.0	17.1	14.6	12.7	11.3
30	21.9	17.0	14.0	11.9	10.3	9.1
46	14.8	14.0	11.3	9.5	8.1	7.1
48		13.8	11.2	9.3	8.0	7.0
50			11.1	9.2	7.8	6.8
55				9.0	7.6	6.6
60						6.4

Main boom 43.4 m

Radius (m)	Fixed jib length (m)					
	11	14	17	20	23	26
9.3	36.8					
12	35.2	12.0				
13	34.0	25.7	20.8			
16	31.0	23.7	19.2	16.3		
18	29.5	22.4	18.4	15.5	13.5	
20	28.0	21.4	17.5	14.8	12.8	11.3
30	22.8	17.7	14.5	12.2	10.6	9.4
40	18.3	15.3	12.5	10.5	9.1	8.0
50	12.3	12.7	11.3	9.4	8.1	7.1
55			10.9	9.2	7.7	6.7
60				9.0	7.6	6.5
65						6.4

Main boom 49.1 m

Radius (m)	Fixed jib length (m)					
	11	14	17	20	23	26
9.5	36.6					
12	35.6	26.5				
14	33.4	25.1	20.3			
16	31.7	23.9	19.4	16.3		
18	30.0	22.8	18.5	15.6	13.4	
20	28.8	21.8	17.7	14.9	12.9	11.4
30	23.7	18.3	14.8	12.5	10.8	9.5
40	18.0	15.9	12.9	10.8	9.3	8.2
55	9.9	10.2	10.6	9.4	8.0	6.9
60			8.8	9.1	7.7	6.6
65				7.4	7.6	6.5
70						6.4

Main boom 55.1 m

Radius (m)	Fixed jib length (m)					
	11	14	17	20	23	26
9.7	36.7					
12	35.6	26.5				
14	33.7	25.6	20.4			
16	32.2	24.0	19.5	16.3		
18	30.6	23.2	18.6	15.7	13.5	
20	29.3	22.1	18.0	15.0	13.0	11.4
30	24.5	18.7	15.1	12.7	11.0	9.6
40	17.5	16.3	13.2	11.1	9.6	8.3
60	7.6	8.0	8.4	8.7	7.9	6.8
65			6.8	7.1	7.4	6.6
70				5.7	6.0	6.3
75						5.0

Main boom 60.8 m

Radius (m)	Fixed jib length (m)					
	11	14	17	20	23	26
9.9	33.9					
12	33.8	26.2				
14	33.1	25.3	20.2			
16	32.3	24.2	19.5	16.3		
18	31.1	23.3	18.7	15.7	13.5	
20	29.8	22.4	18.1	15.1	13.0	11.4
30	25.1	19.0	15.4	13.0	11.1	9.7
40	17.2	16.7	13.6	11.4	9.8	8.5
65	5.8	6.1	6.5	6.8	7.1	6.7
70			5.1	5.4	5.7	6.0
75				4.2	4.5	4.8
80						3.6

Main boom 66.8 m

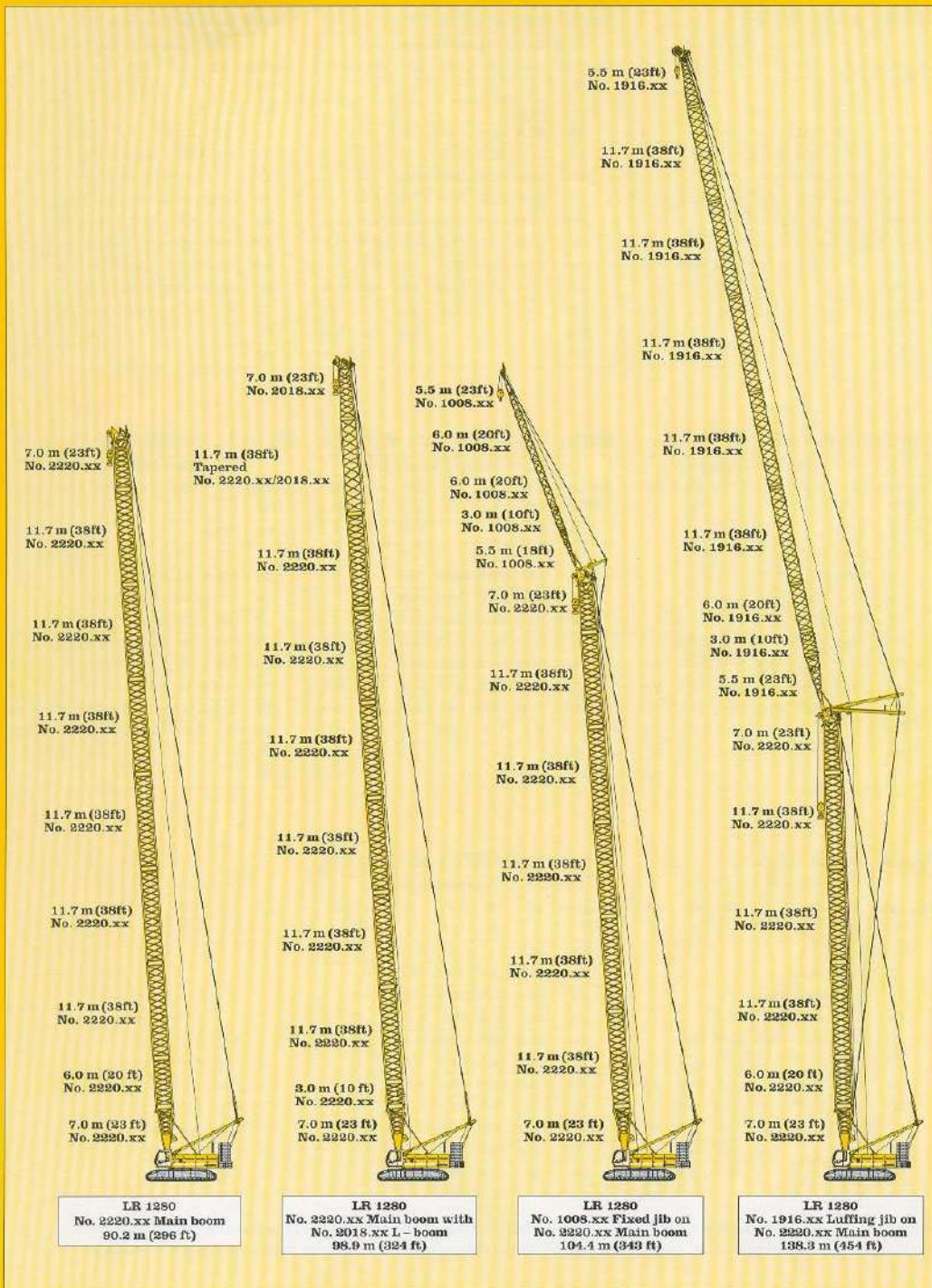
Radius (m)	Fixed jib length (m)					
	11	14	17	20	23	26
10.1	31.1					
12	31.1	26.0				
14	31.2	25.2	20.1			
16	31.0	24.3	19.5	16.2		
18	30.7	23.4	18.8	15.7	13.4	
20	29.6	22.7	18.1	15.2	13.0	11.4
30	24.7	19.5	15.7	13.1	11.2	9.8
40	16.4	16.7	13.9	11.6	9.9	8.6
70	4.0	4.3	4.7	5.0	5.3	5.6
75			3.5	3.8	4.1	4.4
80				2.7	3.0	3.3
85						2.3

Main boom 75.5 m

Radius (m)	Fixed jib length (m)		
	11	14	17
10.4	26.6		
13	26.5	23.1	
16	26.2	23.4	19.5
20	25.8	22.5	18.2
30	22.3	19.8	16.0
40	15.1	15.5	14.3
50	9.5	10.2	10.6
60	6.2	6.5	6.9
65	4.7	5.0	5.4
70	3.4	3.7	4.1
75	2.3	2.6	2.9
80		1.5	1.9

Capacities in metric tons with fixed jib (No. 1008.xx) 85.5 t counterweight and 36.0 t carbody counterweight.
Above lift chart is for reference only. For actual lift duty please refer to lift chart in operator's cab or manual.

Lift chart - fixed jib - offset 30°



Boom combinations